



FME Solutions for Esri ArcGIS



Achieve More with ArcGIS

Extend the powerful mapping and spatial analysis platform of Esri® ArcGIS® with FME®'s unrivalled spatial data transformation technology. Efficiently integrate non-Esri data into the ArcGIS environment and also make ArcGIS data and services accessible for use in other systems – improving decision making for everyone.

Easily Bring Any Data into ArcGIS

Easily access data from nearly any source and leverage it within the ArcGIS platform. Use FME's support for over 300 formats - including Geodatabase, Shapefile, and ArcSDE™ – and unparalleled data transformation capabilities to move any data into ArcGIS's precise data model requirements.

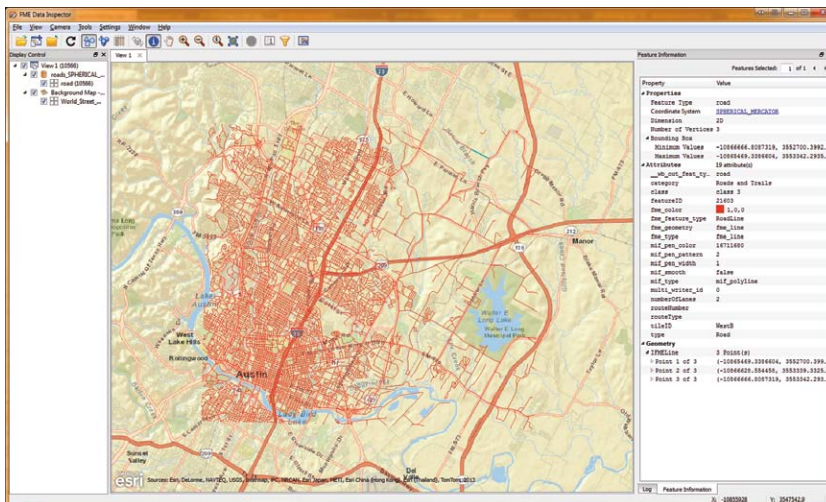
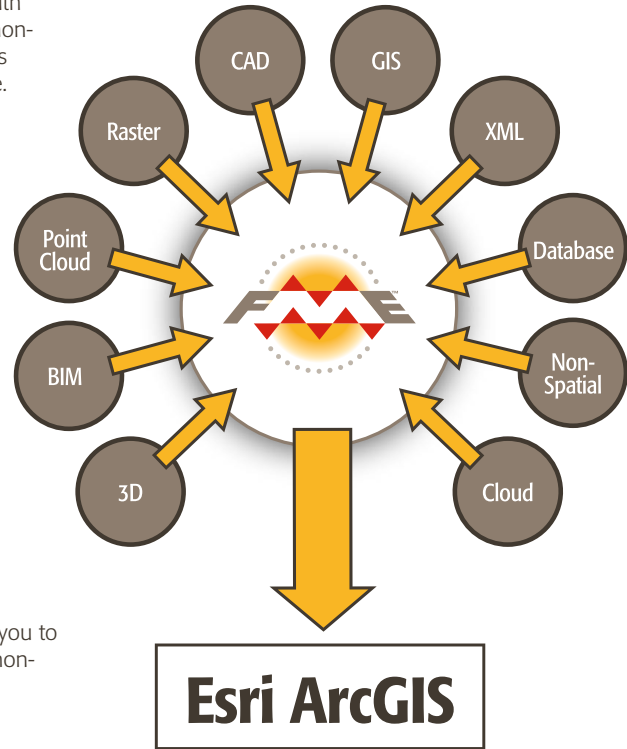
Go beyond simple format conversion by transforming the content and structure of your data so that it can be used more effectively in ArcGIS. For example:

- Preserve data's richness such as CAD annotation and symbology when bringing it into ArcGIS
- Manipulate large BIM and LiDAR datasets into manageable file sizes by extracting only necessary information
- Reproject between thousands of coordinate systems

For added simplicity, FME's tight integration with the ArcGIS platform enables you to build spatial ETL tasks directly into the geoprocessing framework and import non-native data without leaving the familiarity of the ArcGIS environment.

Make ArcGIS Data Available to Anyone

Allow ArcGIS data to be used beyond your GIS department and enable your entire organization to benefit from spatial information. Whether it's for use in another application, storage in a central database, or simple viewing in a public-friendly format like PDF – the transformation power of FME can deliver.



An ArcGIS Online map being used as a background in the FME Data Inspector.

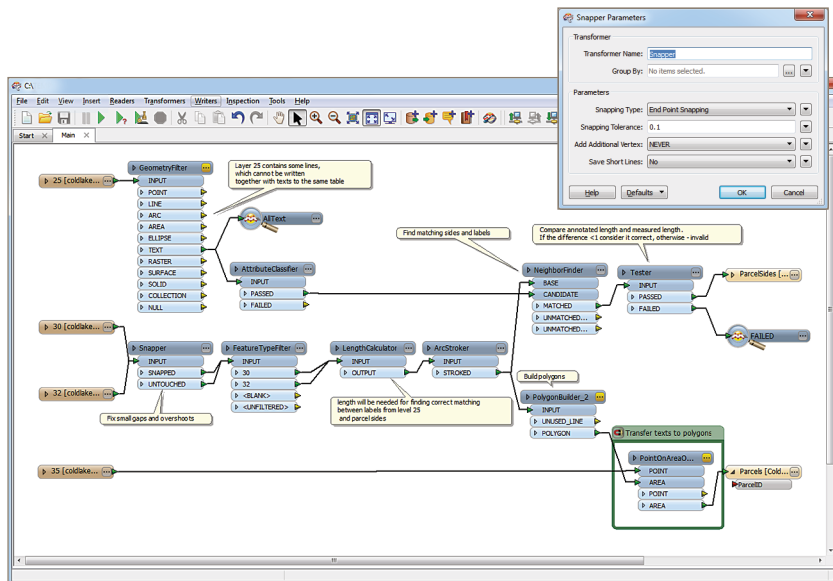
Leverage ArcGIS Online Services

Easily leverage ArcGIS Online services in your data transformation workflows with FME – no coding required. Use FME's transformation power to access ArcGIS Online's many valuable services – geocoding, drive-time polygons, and geo-enrichment – however you need. Plus, an integration with ArcGIS Online allows you to use maps from your account as basemaps within the FME Data Inspector.

A Simple Solution with Powerful Results

An alternative to hours of coding, quickly configure FME workflows and focus on other tasks while they run automatically in the background. Workflows are reusable and flexible and can be easily adjusted to suit changing requirements.

Whether bringing non-Esri data into ArcGIS, or making ArcGIS data and services accessible by others, FME efficiently provides you and your colleagues access to more data to improve decision making and the overall success of your organization.



An FME workspace where incoming CAD data is transformed to fit the requirements of ArcGIS. Data is easily manipulated through highly configurable transformers such as the Snapper - shown top right - which fixes small gaps and overshoots based on parameters you input.

Prepare Data for Compliance with Esri Initiatives

Take advantage of Esri Community Maps and ArcGIS for Local Government spatial data initiatives using FME to quickly comply with their data model requirements. With workspace templates customized to transform data to meet the precise specifications of each program, use FME to efficiently unlock their benefits for your organization.

Extend the reach of your ArcGIS investment throughout your organization with FME. Visit www.safe.com/Esri to learn more.

Did you know?

FME is the technology that powers the ArcGIS Data Interoperability Extension? See how they differ and determine which is right for you:
www.safe.com/datainterop.

"Safe Software sets the standard for spatial data interoperability, so it was the obvious choice to use their FME technology for Esri's ArcGIS Data Interoperability Extension."

-Jack Dangermond, Esri President